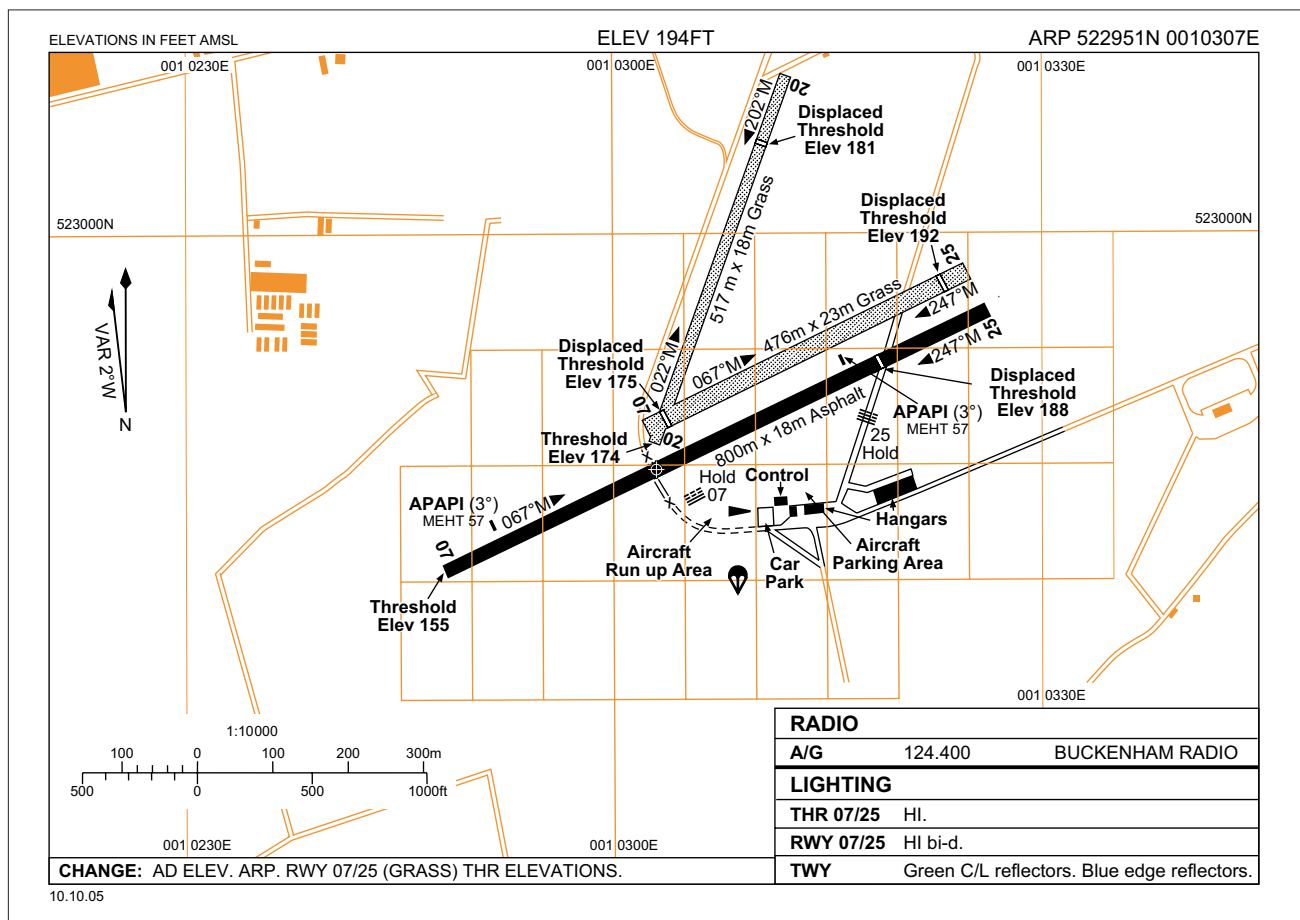


**EGSV AD 2.1** **EGSV** **OLD BUCKENHAM**



**EGSV AD 2.2 – AERODROME GEOGRAPHICAL AND ADMINISTRATIVE DATA**

2	<b>Direction and distance from city:</b>	12 nm SW of Norwich City.
4	<b>Geoid undulation at AD ELEV PSN:</b>	155 ft.
5	<b>Magnetic Variation/Annual Change:</b>	W2.1° (2007) – 0.14° decreasing.
6	<b>AD Administration:</b>	Touchdown Aero Centre Limited.
	<b>Address:</b>	Old Buckenham Aerodrome, Abbey Road, Old Buckenham, Norfolk, NR17 1PU.
	<b>Telephone:</b>	01953-860806.
	<b>Fax:</b>	01953-860606.

**EGSV AD 2.3 – OPERATIONAL HOURS**

1	<b>AD:</b>	<b>Winter:</b> Fri, Sat & Sun 0900-SS; other times by arrangement. <b>Summer:</b> Fri, Sat & Sun 0800-1900; other times by arrangement.
2	<b>Customs and Immigration:</b>	
7	<b>ATS:</b>	<b>Winter:</b> A/G (ATZ) Fri, Sat & Sun 0900-SS. A/G also available by arrangement. <b>Summer:</b> A/G (ATZ) Fri, Sat & Sun 0800-1900. A/G also available by arrangement.
8	<b>Fuelling:</b>	As AD hours.
12	<b>Remarks:</b>	Aerodrome unlicensed Mon-Thur.

**EGSV AD 2.4 – HANDLING SERVICES AND FACILITIES**

2	<b>Fuel/oil types:</b>	Fuel: AVGAS 100LL. AVTUR Jet A-1. Oil: W100/W80.
3	<b>Fuelling facilities/capacity:</b>	

## EGSV AD 2.6 – RESCUE AND FIRE FIGHTING SERVICES

1	AD Category for fire fighting:	RFF Category Special, Fri, Sat and Sun.
---	--------------------------------	---

## EGSV AD 2.10 – AERODROME OBSTACLES

In Approach/Take-off areas			In circling area and at aerodrome		
1			2		
Runway/Area affected	Obstacle type Elevation Markings/lighting	Co-ordinates	Obstacle type Elevation Markings/lighting	Co-ordinates	
a	b	c	a	b	
	ft amsl		ft amsl		
3	Remarks:	Radio mast (Tacolneston) 735 ft amsl, 3 nm bearing 070°T from AD. Occasional straw stack maximum 40 ft aal, 400 metres from Runway 25 threshold			

## EGSV AD 2.12 – RUNWAY PHYSICAL CHARACTERISTICS

Designations RWY Number	True bearing	Dimensions of RWY (m)	Strength (PCN) and surface of RWY and stopway	THR co-ordinates RWY end co-ordinates THR Geoid undulation	THR elevation Highest elevation of TDZ of precision APP RWY
1	2	3	4	5	6
07	064.58°	800 x 18	Asphalt	522945.73N 0010248.18E – GUND 155 ft	THR 155 ft
25	244.58°	800 x 18	Asphalt	522954.60N 0010318.76E – GUND 155 ft	THR 188 ft
07	064.54°	476 x 23	Grass	522949.21N 0010304.56E – GUND 155 ft	THR 174 ft
25	244.54°	476 x 23	Grass	522954.79N 0010323.76E – GUND 155 ft	THR 192 ft
02	020.00°	517 x 18	Grass	*522951.00N 0010303.00E – GUND 155 ft	THR 174 ft
20	202.00°	517 x 18	Grass	*523004.00N 0010310.00E – GUND 155 ft	THR 181 ft
Slope of RWY/SWY	Stopway Dimensions (m)	Clearway Dimensions (m)	Strip Dimensions (m)	OFZ	
7	8	9	10	11	
12	Remarks:	Runway 25 - 160 m licensed starter extension to clear near and distant obstacles. Runways 02 and 07 QDMs are displaced due to coincidental thresholds. Corner markers are correctly positioned.			

EGSV AD 2.13 – DECLARED DISTANCES					
Runway Designator	TORA (m)	TODA (m)	ASDA (m)	LDA (m)	Remarks
1	2	3	4	5	6
07 Asphalt	640	640	640	640	
25 Asphalt	799	799	799	640	
07 Grass	442	442	442	442	
25 Grass	472	472	472	409	
02	413	413	498	498	
20	498	498	498	413	

EGSV AD 2.17 – ATS AIRSPACE		
Designation and lateral limits	Vertical limits	Airspace Classification
1	2	3
<b>Old Buckenham Aerodrome Traffic Zone (ATZ)</b> Circle radius 2 nm centred on longest notified runway (07/25) 522951N 0010307E.	2000 ft aal SFC	G †
<b>4 ATS unit callsign:</b> <b>Language:</b> <b>5 Transition altitude:</b> <b>6 Remarks:</b>	Buckenham Radio. English.  † Refer to Section ENR 1.4 for Notifications. See AD 2.3 for ATZ hours.	

EGSV AD 2.20 – LOCAL TRAFFIC REGULATIONS	
<b>1 Aerodrome Regulations</b> a No microlights permitted at AD. b No helicopters permitted at AD unless for maintenance. c Aerodrome is not licensed for night flying.	<b>4 Warnings</b> a Gliding takes place at Tibenham aerodrome 5 nm to the southeast. b Radio Mast 735 ft amsl, 3 nm northeast of the AD. c Free-fall parachuting takes place up to FL 150, normally during daylight hours (ENR 5-5-3-3 refers).
→	

EGSV AD 2.21 – NOISE ABATEMENT PROCEDURES
Avoid overflying the village of Old Buckenham (1 nm SSW of the AD) and the town of Attleborough (2 nm NW of the AD).

EGSV AD 2.22 – FLIGHT PROCEDURES
a Circuit directions: Runway 07 - LH; Runway 25 - RH. Circuit height: 1000 ft aal. b <b>Arrivals:</b> i No overhead joins; ii When joining Runway 07 from the west, report at Snetterton Heath; iii When joining Runway 25 from the east, report at Tacolneston Mast. c <b>Departures:</b> i When departing from Runway 25, turn onto track 270° until reaching the railway line south of Attleborough; ii When departing from Runway 07, maintain runway heading until reaching 1500 ft aal prior to setting course.

**INTENTIONALLY BLANK**